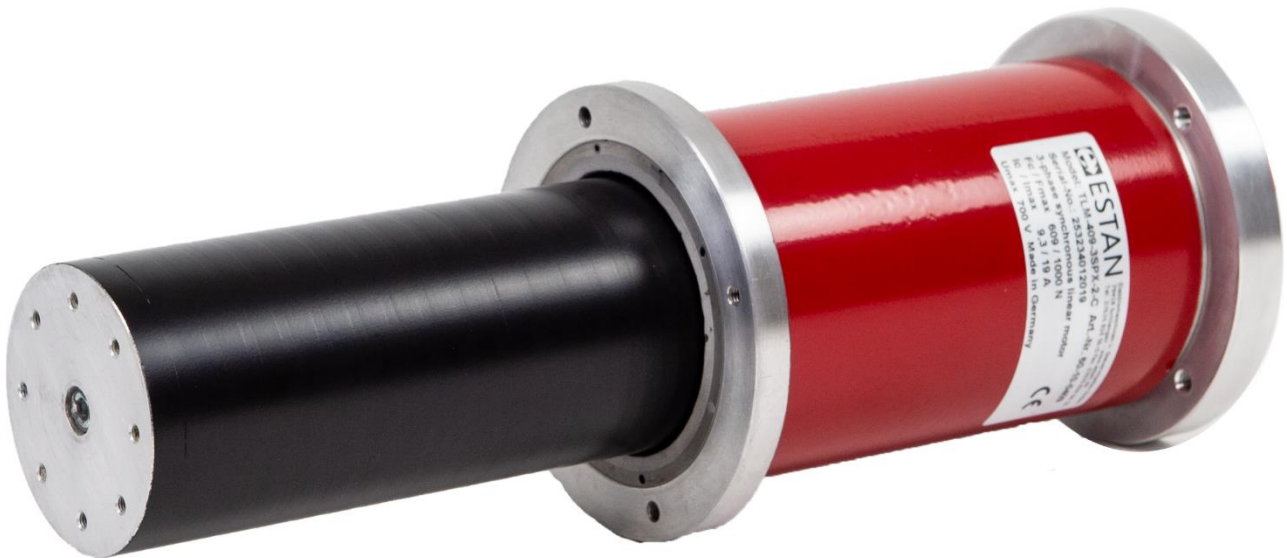




ESTAN

ESTAN
Elektromaschinen und
Steuerungsbau GmbH
Burgunderstraße 6
D-79418 Schliengen



Tubularer-Linear-Motor 3-Phasen Synchronous Motor

Type: TLM

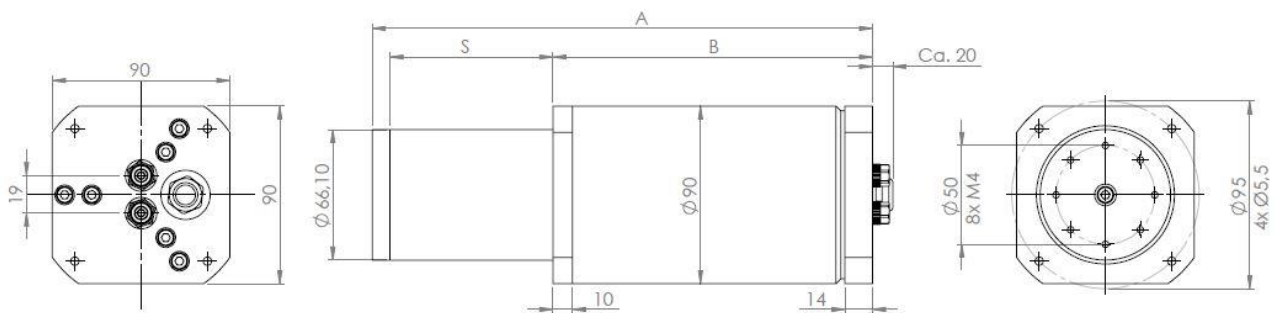
Continuous force:

300 – 1050 N

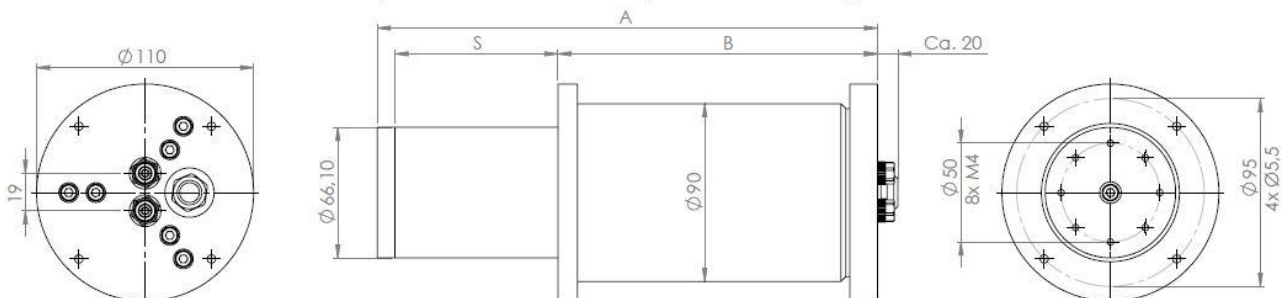
Maximum force:

510 – 1730 N

Type	A (mm)	B (mm)	S = stroke (mm)	Continuous force (N)	Maximum force (N)
TLM 203	143,5	107,0	27,5	300	510
TLM 204	171,0		55,0	300	510
TLM 205	198,5		82,5	300	510
TLM 206	226,0		110,0	300	510
TLM 207	253,5		137,5	300	510
TLM 304	171,0	134,5	27,5	450	770
TLM 305	198,5		55,0	450	770
TLM 306	226,0		82,5	450	770
TLM 307	253,5		110,0	450	770
TLM 308	281,0		137,5	450	770
TLM 405	198,5	162,0	27,5	600	1000
TLM 406	226,0		55,0	600	1000
TLM 407	253,5		82,5	600	1000
TLM 408	281,0		110,0	600	1000
TLM 409	308,5		137,5	610	1000
TLM 506	226,0	189,5	27,5	750	1250
TLM 507	253,5		55,0	750	1250
TLM 508	281,0		82,5	750	1250
TLM 509	208,5		110,0	760	1250
TLM 510	336,0		137,5	760	1250
TLM 607	253,5	217,0	27,5	900	1490
TLM 608	281,0		55,0	900	1490
TLM 609	308,5		82,5	910	1490
TLM 610	336,0		110,0	910	1490
TLM 708	281,0	244,5	27,5	1050	1730
TLM 709	308,5		55,0	1070	1730
TLM 710	336,0		82,5	1070	1730



Optional mit rundem Flansch / optional with round flange





ESTAN

ESTAN
Elektromaschinen und
Steuerungsbau GmbH
Burgunderstraße 6
D-79418 Schliengen

ESTAN-Synchronous linear motor

Construction:

Synchronous linear motor with ironcore windings and water cooling. The motor consists of two interlocking running cylinders (primary unit inside with the winding and secondary unit outside with the magnetic system).

The motor is bearingless. The motor is guided via the bearing point of the load in the application.

In the delivery state primary and secondary unit are centered and firmly connected. As a result, a trouble-free installation in the bearing in the machine is possible.

The motor is designed as a long-stator motor (primary unit longer than secondary unit). From this concept results in operation a fixed primary unit and a moving secondary unit. As a result, the supply lines to the motor (cable, water hose) are not moved.

In order to position several axes next to each other the motor is designed with a square flange to save space.

Characteristics:

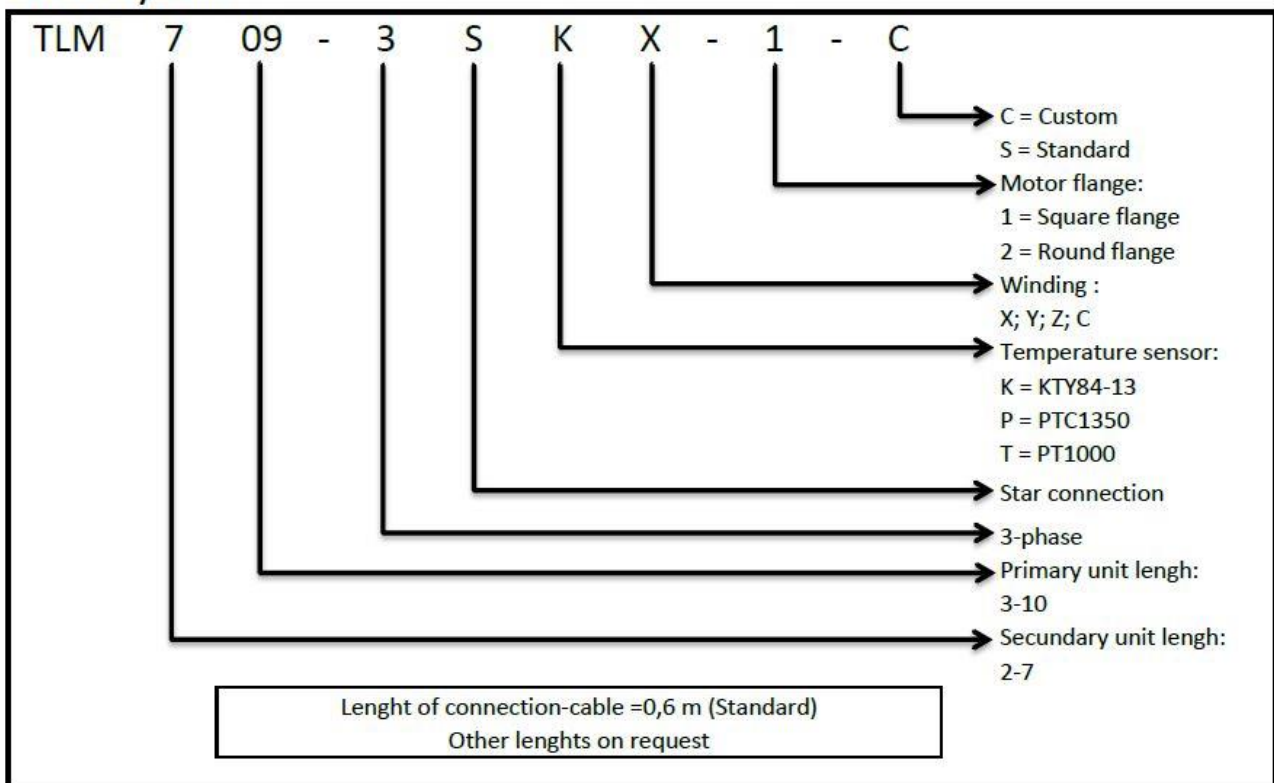
Highly dynamic motor with very fast response.

Working conditions:

The permissible winding temperature is max. 130 °C at a cooling water temperature of 20 ° C and an ambient temperature of 35 ° C.

Subject to change.

Order-key-code

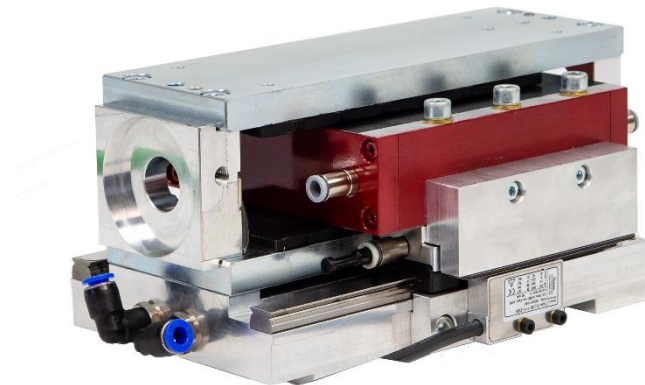


More products by ESTAN

TLM 55

Tubularer-Linear-Motor

3-Phasen Synchron
Linearmotor mit
eisenbehafteter Wicklung.



FLM

3-phase synchronous linear
motor for short strokes.
Due to the integrated water
cooling a very high power
density is achieved.

ESS

3-phase synchronous servo
motor. These motors are
remarkable due their excellent
ratio of power and size.





ESTAN

ESTAN
Elektromaschinen und
Steuerungsbau GmbH
Burgunderstraße 6
D-79418 Schliengen

Sales Representation

Italy



Sales Representation & Technical Consulting

HOMBERGER S.p.A.

Divisione Motion Control

Via d. Laboratori 12 B-D

20090 BUCCINASCO (MI)

Italy

Tel. +39 02 576 954

Fax +39 02 936 507 42

Info.mc@homberger.com

www.homberger.com

Denmark



Regal A/S

Industrivej 4

DK 4000 Roskilde

Denmark

Tel. (+45) 46677 7000

Fax (+45) 4675 7620

regal@regal.dk

www.regal.dk

Netherlands



Elmekanic B.V.

Spelleweg 3

7475 GV Markelo

The Netherlands

Tel. +31(0)547 367 357

Fax +31(0)547 367 356

info@elmekanic.nl

www.elmekanic.nl



ESTAN

ESTAN
Elektromaschinen und
Steuerungsbau GmbH
Burgunderstraße 6
D-79418 Schliengen

Who are we

ESTAN was founded in 1975 and today is an international company with currently 27 employees.

Over 40 years of drive technology, 1975 - today, that also means 40 years of experience and competence.

At our location in Schliengen we produce with our own production, made in Germany.

Our core competence is the design, development and sale of DC permanent magnet motors.

In December 2017, we have extended our product range with the TLM motor.

When it comes to the solution of sophisticated drive technologies with electric motors, ESTAN GmbH is your innovative and reliable partner.

Quality

Customer satisfaction and quality are top priorities at ESTAN. We strive for close, trusting and long-term cooperation with our customers, suppliers and partners.

We are certified according to ISO 9001:2015.



-  Quality
-  Made in
-  Germany